

The World of Air Water

A Truly
Global Force
Making
WATER
from
AIR



air≈water



The Air Water International Group

is the acknowledged world leader in the design, manufacture and marketing of a large range of unique Air to Water machines of all sizes, to offer and satisfy a globe of people with water needs.

The global shortage of clean, pure and drinkable water is no secret, and society acknowledges that the issue has reached crisis levels. According to the United Nations, a child under 16 dies every 8 seconds round the clock, for illnesses related to drinking contaminated or dirty water. The reason these children drink this water, is very basic and simple, - it's the only water to hand, and they are thirsty. Getting sick and dying, all because the water was dirty...

We cannot allow this to continue.

Our company is committed and dedicated to developing the ultimate range of air to water machines, that are both affordable, easy to acquire, economical to operate, plug and play, and easy to maintain.

The following pages will assist you to understand the concept of the air to water technology, the technology itself, the unique design and production into usable products, our complete range of air to water machines currently available, and their applications on a worldwide basis.

air≈water

The Air to Water Technology

The technology behind the Air to Water machines and systems comes from the fact that there is humidity in the air we breath. This humidity is pulled into our machines, and converted to condensation, which in turn is then collated and stored in our unique stainless steel water tanks. The water is then filtered and purified to produce the cleanest, clearest and purest water available today. None of our water is chemically treated, so the water you will drink is in fact from the same air that you breath.

Air Water Machines

Air to Water machines come in a wide range of sizes and applications. From the home to the office, to the factory floor, to farmers, doctors, hospitals, building and construction sites, oil fields, oil rigs and platforms, the military, international aid and rescue organizations, stationary and or mobile units, and so on. In fact, our company can design and create the air to water machine bespoke for your special individual needs.

In addition to our Air to Water machines, we also supply a host of ancillary products and services too. Generators for power, to Liquid Bagging machines, Plastic Rolls for Bags, to Bottling Machines, Bottles, Plastic containers, Air and Water Filters, Minerlizers, UV lamps, etc

So, consider us the 'One Stop Shop', offering a complete solution to all air to water needs.



air≈water



For Home Use — We Bring You ... **Space One™**

The **SpaceOne™** AWG, Introduces a Whole New Revolution in Water Generation.

Water from the air, water from the bottle, or water from the tap, NO difference, all are filtered, treated and purified prior to being chilled and dispensed. Our exciting new **SpaceOne™** AWG is made to the highest globally recommended manufacturing standards and creates only the cleanest, clearest, and purest water, all from the air we breath, even surpassing water quality standards. The air intake is filtered, the water internally circulated, UV treated, and passed through Carbon Block filters, re-mineralized and then chilled for the maximum cold taste and freshness.

The machine is fully automated, uses state of the art high tech systems, has a fully diagnostic control board, with multiple redundant safety systems built in for maximum safety. The unique LED Display coupled with an electronic spout, ensures the smooth and constant operation, as well as peace of mind for the owner/operator. *Truly Plug-N-Play!*

TECHNICAL SPECIFICATIONS*

Air-Water Making Cap.:	23-26 Liters per 24 hrs
Power Source:	110v /60 Hz or 220v / 50Hz
Power Input:	0.55 kW / 5.2 Amps
Power Consumption:	0.55 kW per liter
Refrigerant:	R22 or R407

IDEAL WORKING CONDITIONS:

Temperature:	25-38° C
Humidity:	70-85% RH
UV Sterilizer Lights:	1 x 4W + 2 x 11W
Water Tank Volumes:	Lower: 9 liter Upper: 10 liter
Noise Level:	55 dB
Colors:	to customer choice

air≈water

*All technical data listed is subject to change without notice.

The **SpaceTwo™** – a Double New Level of Water Dispensing

It's always a similar story. The water cooler has just run out of water — *Quick* — call the bottling company, and/or “I can't lift the fresh bottle onto the machine, my back hurts”. “Where's Fred? Oh no, he's off today. How are we going to get the machine to give us water?”

No Longer! Those days are history!

Our innovative new **SpaceTwo™** machine, can make more than 50 liters of drinking water daily from the air, or can dispense water from not one, but 2 Water Bottles, and can also filter and purify tap water in unlimited quantities. With features like the *SpaceOne™* machine, this brand new concept in water-making /dispensing, brings new levels of drinking water to the world.

And Now... **SpaceTwo™** with Ice

All the benefits of the unique **SpaceTwo™** machine, with a commercial style *IceMaker* built in. The ice is made from the water created from the air, or from tap or bottled water. The unit can operate with or without the ice feature running. *Total flexibility.*

TECHNICAL SPECIFICATIONS*

Air-Water Making Cap.: 50-55 Ltrs /24 hrs
Power Source: 110v / 220v
Power Input: 0.55 kW / 5.2 Amps
Power Consumption: 1.55 kW per liter
Refrigerant: R22 or R407

IDEAL WORKING CONDITIONS:

Temperature: 25-38° C
Humidity: 70-85% RH
UV Sterilizer Lights: 2 x 4W + 4 x 11W
Water Tank Volumes: Lower: 16 liter
Upper: 22 liter
Noise Level: 55 dB
Colors: to customer choice

ICE MAKER

(within SpaceTwo™):

Body Color:
Stainless Steel

Unit Dimensions

(W x D x H):

450 x 520 x 800 mm

Color Box Dimensions

(W x D x H):

520 x 590 x 870 mm

Net Weight: 40 kgs

Gross Weight: 43 kg

Transparent Ice Cubes:

Makes over 40kgs daily

Ice Cube Storage: 20 kgs



And here's the
Space Two™
with ICE!



Choice of Colors:



air≈water

For Offices — Here's ... **Space Two™**

*All technical data listed is subject to change without notice.

Magique 1 - Magique Slim the Magique Water Dispensers

The concept of the Magique WaterMaker and Dispensers, is that of a Split System, allowing water to be made in the open air, the dispensing unit located either outdoor or indoors, connected by a water tube.

The Outdoor Unit (s), a stainless steel box shaped unit, makes water and passes it directly to the Indoor Unit(s) for dispensing. It operates by converting the humidity in the air to water. It is dependant on the level of humidity in the air and the temperature in order to produce quantities of water.

The Indoor Unit (s) combine a water terminal with a refrigerator and takes on the second step of purification of the water, both from air as well as municipal tap water. The water then flows into the cooling tank and gives hot/cold water. Also installed is UV light technology, destroying any bacteria in the tank, and further preventing the pure water from becoming contaminated again.

The Water Maker™, shown here, creates water from the air and sends it to either of these dispensers.



TECHNICAL SPECIFICATIONS*:

MAGIQUE 1	(Indoor Unit)	(Outdoor Unit)
Power Supply Phase:	220-240V/50Hz	220-240V/50Hz/1 Phase
Cooling Power / Current:	150W/0.9A	-----
Heating Power / Current:	500W / 3A	-----
Refrigerant Type:	R134a	R134a
Volume of Refrigerator:	2QBIFT	-----
Production Capacity:	-----	26 liters per 24 hrs
Net Weight:	42 Kg	28 Kg
Input Power:	530W / 3.5A	620W / 3.5A
Heating Capacity:	5L.h	-----
Cooling Capacity:	6L/h	-----
Power Consumption:	0.6KW/h/L	0.57KW/h/L
Operating Temperature/ Relative Humidity:	25°-38° C	25°-43° C; 55%-100% R/H
Size (H x W x D/mm):	460 x 425 x 1140	400 x 380 x 612
Noise Level:	-----	50-dB (A)

Note: Technical Specs for the Magique Slim model on application.

air≈water

*The actual Power Consumption will vary with temperature, R/H levels and energy costs. All technical data listed is subject to change without notice.

Magique 1 - Magique Slim



The AW120 - "The COMMERCIAL" Great Little Machine with Big Output

Already the most sold and accepted air to water machine worldwide, having chalked up sales to more than 21 countries, we now have the new improved and superior model machine to any other. The new AW120 Super. This new model, constructed only from the best materials, and utilizing the latest in high tech solid state electronics, coupled with the highest grades of in line filters and UV lamps, the new AW120 Super has NO competition.



AW120 TECHNICAL SPECIFICATIONS*

Capacity Liters:	120 Liters per 24 hrs
Ideal Working Conditions:	20-40° C, 60-100% RH
Size (H x W x D):	119 x 72 x 76 cm
Weight:	120 kg
Power Consumption:	2.9 kW
Compressor Power Consumption:	2.2 kW
Average Power Consumption:	0.1 - 0.4 kWh/L
PS Phase:	230V - 50Hz Single Phase
Electronic Control:	KAV-KOR
UV:	Included
Refrigerant:	R407c
Chiller:	Optional
Noise Level:	65 dB

air≈water

*The actual Power Consumption will vary with temperature, R/H levels and energy costs. All technical data listed is subject to change without notice.



AW120 Super

The AW250 & AW250/C – “THE WORKER”

Heavy-duty Water Machines

Designed for small factory/workshops, small clinics or hospitals and comes with, or without, a water tank. In addition, this machine is designed to dispense water through up to 6 exit valves for multiple recipients. Model AW250/C has a built in chiller to provide cool water to maintain the integrity of the water quality.



AW250/C



AW250



AW250/C & AW250

AW250 TECHNICAL SPECIFICATIONS*

Capacity Liters:	250 Liters per 24 hrs
Ideal Working Conditions:	20-40° C, 60-100% RH
Size (H x W x D):	119 x 76 x 90 cm (tank, no chiller) 119 x 76 x 132cm (tank, chiller)
Weight:	150 kg
Power Consumption:	4.3 kW
Compressor Power Consumption:	3.5 kW
Average Power Consumption:	0.1 - 0.4* kWh/L
PS Phase:	230V - 50Hz Single Phase
Electronic Control:	KAV-KOR
UV:	Included
Refrigerant:	R407c
Chiller:	Optional
Noise Level:	67 dB

air≈water

*The actual Power Consumption will vary with temperature, R/H levels and energy costs. All technical data listed is subject to change without notice.

The AW250M– the Heavy-duty Mobile Water Machine

Much like the AW 250, this mobile unit comes with an installed chiller to ensure ice cold water at all times. The AW250M is ideally for the small factory/workshops, small clinics or hospitals, constructions sites, and wherever drinking water is needed. The AW 250M has a “built-on-board” stainless steel tank with a complete filtration system. In addition, this machine can dispense water through 6 exit valves for multiple recipients.



AW250M TECHNICAL SPECIFICATIONS*

Capacity Liters:	250 Liters per 24 hrs
Ideal Working Conditions:	20-40° C, 60-100% RH
Size (H x W x D):	119 x 76 x 90 cm (tank, no chiller) 119 x 76 x 1320cm (tank, chiller)
Weight:	150 kg
Power Consumption:	4.3 kW
Compressor Power Consumption:	3.5 kW
Average Power Consumption:	0.1 - 0.4* kWh/L
PS Phase:	230V - 50Hz Single Phase
Electronic Control:	KAV-KOR
UV:	Included
Refrigerant:	R407c
Chiller:	Optional
Noise Level:	67 dB

air≈water

*The actual Power Consumption will vary with temperature, R/H levels and energy costs. All technical data listed is subject to change without notice.



AW250M

The AW500 - "THE LIFESAVER" When you need more — Group Water

When you need more water... this workhorse produces. Up to 100 people will have access 5 liters of daily, water that will sustain life. Equipped with a large stainless steel tank, in built UV, filters and an in-line mineralizer, this machine is truly a *LIFESAVER*. Its construction and durability will give many years of low maintenance performance in any environment.



Image of Water tank & Pump left exposed.

AW500 TECHNICAL SPECIFICATIONS*

Capacity Liters:	500 Liters per 24 hrs
Ideal Working Conditions:	20-40° C, 60-100% RH
Size (H x W x D):	150 x 72 x 90 cm
Weight:	250 kg
Power Consumption:	8.6 kW
Compressor Power Consumption:	7.0 kW
Average Power Consumption:	0.1 - 0.4* kWh/L
PS Phase:	230V - 50Hz Single Phase
Electronic Control:	KAV-KOR
UV:	Included
Refrigerant:	R407c
Chiller:	Optional
Noise Level:	69 dB

AW500

air≈water

*The actual Power Consumption will vary with temperature, R/H levels and energy costs. All technical data listed is subject to change without notice.

The *AW500M* - "THE LIFESAVER" When you need more — Group Water

When you need more water — Wherever you need it
Much like the stationary model, this unit performs all the same functions, but has the mobility feature. Perfect for moving from place to place, or having the ability to be rapidly deploy to any situation, this great machine will act out its name many times.

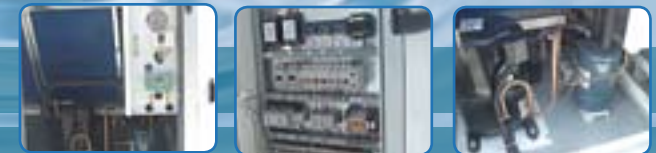


AW500M TECHNICAL SPECIFICATIONS*

Capacity Liters:	500 Liters per 24 hrs
Ideal Working Conditions:	20-40° C, 60-100% RH
Size (H x W x D):	150 x 72 x 90 cm
Weight:	250 kg
Power Consumption:	8.6 kW
Compressor Power Consumption:	7.0 kW
Average Power Consumption:	0.1 - 0.4* kWh/L
PS Phase:	230V - 50Hz Single Phase
Electronic Control:	KAV-KOR
UV:	Included
Refrigerant:	R407c
Chiller:	Optional
Noise Level:	69 dB

air≈water

*The actual Power Consumption will vary with temperature, R/H levels and energy costs. All technical data listed is subject to change without notice.



AW500M



The AW750 - "THE SUPPLIER" When you need more — Group Water

Water water everywhere, and ,lots and lots to drink. Sturdy built,and the right machine for the right situation. The AW750 - The **SUPPLIER**, is the perfect machine for all your water needs. Enjoying all the positive aspects of all the smaller air water units, this unit borders on the larger style watermaker, and can be deployed in any global locale needing immediate and plentiful water supplies.



AW750 TECHNICAL SPECIFICATIONS*

Capacity Liters:	750 Liters per 24 hrs
Ideal Working Conditions:	20-40° C, 60-100% RH
Size (H x W x D):	155 x 82 x 95 cm
Weight:	300 kg
Power Consumption:	12.8 kW
Compressor Power Consumption:	13.0 kW
Average Power Consumption:	0.1 - 0.4* kWh/L
PS Phase:	230V - 50Hz Single Phase
Electronic Control:	KAV-KOR
UV:	Included
Refrigerant:	R407c
Chiller:	Optional
Noise Level:	72 dB

AW750

air≈water

*The actual Power Consumption will vary with temperature, R/H levels and energy costs. All technical data listed is subject to change without notice.

The AW750M - "THE SUPPLIER"

When you need more — Group Water

Check out this long slim and sleek unit that is designed for a multitude of uses. This mobile version of the **SUPPLIER** will perform to its very best in any situation. Includes a large stainless steel tank with unique filtration system, and multiple taps to dispensers. The water is maintained fully chilled in the tank for continuous supplies of high quality drinking water.



AW750M TECHNICAL SPECIFICATIONS*

Capacity Liters:	750 Liters per 24 hrs
Ideal Working Conditions:	20-40° C, 60-100% RH
Size (H x W x D):	155 x 82 x 95 cm
Weight:	300 kg
Power Consumption:	12.8 kW
Compressor Power Consumption:	13.0 kW
Average Power Consumption:	0.1 - 0.4* kWh/L
PS Phase:	230V - 50Hz Single Phase
Electronic Control:	KAV-KOR
UV:	Included
Refrigerant:	R407c
Chiller:	Optional
Noise Level:	72 dB

air≈water

*The actual Power Consumption will vary with temperature, R/H levels and energy costs. All technical data listed is subject to change without notice.



AW750M



The AW1000 - "THE VILLAGER" the Big Water Source

This state-of-the-art unit provides 1,000 liters PLUS, of clean, pure water that can sustain 250 people or more daily. If you need water, this is *THE* machine that will deliver an abundant supply 24/7 all year round. It has all the features, and can be customized for your specific needs.



AW1000 TECHNICAL SPECIFICATIONS*

Capacity Liters:	1000 Liters per 24 hrs
Ideal Working Conditions:	20-40° C, 60-100% RH
Size (H x W x D):	160 x 100 x 100 cm
Weight:	350 kg
Power Consumption:	17.0 kW
Compressor Power Consumption:	16.0kW
Average Power Consumption:	0.1 - 0.4* kWh/L
PS Phase:	380V - 50Hz Three Phase
Electronic Control:	KAV-KOR
UV:	Included
Refrigerant:	R407c
Chiller:	Optional
Noise Level:	74 dB

AW1000

air≈water

*The actual Power Consumption will vary with temperature, R/H levels and energy costs. All technical data listed is subject to change without notice.

The AW1000M - "THE VILLAGER" the Big Water Source that Goes Anywhere

Similar to the AW1000 Stationary unit, but only in as much as the amount of water it makes daily. However, its compact and unique design has already been applauded by its customers, has set new record breaking standards in Mobile Water supplies. This state-of-the-art unit provides 1,000 liters and more of clean, pure water that can sustain 250 people daily anywhere in the world.



AW1000M TECHNICAL SPECIFICATIONS*

Capacity Liters:	1000 Liters per 24 hrs
Ideal Working Conditions:	20-40° C, 60-100% RH
Size (H x W x D):	160 x 100 x 100 cm
Weight:	350 kg
Power Consumption:	17.0 kW
Compressor Power Consumption:	16.0kW
Average Power Consumption:	0.1 - 0.4* kWh/L
PS Phase:	380V - 50Hz Three Phase
Electronic Control:	KAV-KOR
UV:	Included
Refrigerant:	R407c
Chiller:	Optional
Noise Level:	74 dB

air≈water

*The actual Power Consumption will vary with temperature, R/H levels and energy costs. All technical data listed is subject to change without notice.



AW1000M

The AW2200 - "THE COLLECTOR" the Heavy-duty Water Machine

Created in the future, this high tech super water-maker dubbed the *COLLECTOR* is the latest in a line of large air to water machines that are the talk of the world. Designed for water supplies for villages or small towns, this great machine, has been built leaving nothing to chance ... Making water for every need, the *COLLECTOR* is a new reality for on site water from air production.



AW2200 TECHNICAL SPECIFICATIONS*

Capacity Liters:	2200 Liters per 24 hrs
Ideal Working Conditions:	20-40° C, 60-100% RH
Size (H x W x D):	160 x 140 x 480 cm
Weight:	600 kg
Power Consumption:	45.0 kW
Compressor Power Consumption:	40.0kW
Average Power Consumption:	0.1 - 0.4* kWh/L
PS Phase:	380V - 50Hz Three Phase
Electronic Control:	KAV-KOR
UV:	Included
Refrigerant:	R407c
Chiller:	Optional
Noise Level:	77 dB

AW2200

air≈water

*The actual Power Consumption will vary with temperature, R/H levels and energy costs. All technical data listed is subject to change without notice.



The *AW2200M* - "THE COLLECTOR" the Heavy-duty Mobile Water Machine

This superb machine, created from experiences features all the best that this technology can offer. Only top quality parts and materials were used in the making of this new and latest model in the ever growing family of air to water machines.



AW2200M TECHNICAL SPECIFICATIONS*

Capacity Liters:	2200 Liters per 24 hrs
Ideal Working Conditions:	20-40° C, 60-100% RH
Size (H x W x D):	160 x 140 x 480 cm
Weight:	600 kg
Power Consumption:	45.0 kW
Compressor Power Consumption:	40.0kW
Average Power Consumption:	0.1 - 0.4* kWh/L
PS Phase:	380V - 50Hz Three Phase
Electronic Control:	KAV-KOR
UV:	Included
Refrigerant:	R407c
Chiller:	Optional
Noise Level:	77 dB

air≈water

*The actual Power Consumption will vary with temperature, R/H levels and energy costs. All technical data listed is subject to change without notice.



AW2200M



The AW5000 - "THE IRRIGATOR"

This state-of-the-art workhorse produces 5,000 liters of clean, pure water that can sustain 2500 people daily. This machine when networked can supply enough water for a typical farm.



AW5000

AW5000 TECHNICAL SPECIFICATIONS*

Capacity Liters:	5000 Liters per 24 hrs
Ideal Working Conditions:	20-40° C, 60-100% RH
Size (H x W x D):	1150 x 180 x 480 cm
Weight:	1500 kg
Power Consumption:	85.0 kW
Compressor Power Consumption:	80.0kW
Average Power Consumption:	0.1 - 0.4* kWh/L
PS Phase:	380V - 50Hz Three Phase
Electronic Control:	KAV-KOR
UV:	Included
Refrigerant:	R407c
Chiller:	Optional
Noise Level:	77 dB

air≈water

*The actual Power Consumption will vary with temperature, R/H levels and energy costs. All technical data listed is subject to change without notice.

The Air Water 1000M— Emergency Crisis Water Unit

In all emergency situations, the first and foremost need is always for clean, clear and pure drinking water for fast and immediate delivery to the scene of the emergency. Bottled water is a solution, no doubt. However, delivering large quantities of bottled water to remote areas, many times in areas difficult to reach by road, entails heavy expenditures in transportation and money. The Air Water Emergency Crisis Water Unit can be air-lifted to the disaster site and be in operation supplying fresh drinking water to the victims of the disaster and supplying aid to the many organizations working to save lives.

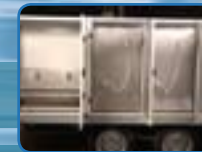


AW1000M EMERGENCY CRISIS WATER UNIT TECHNICAL SPECIFICATIONS*

Capacity Liters:	1000 Liters per 24 hrs
Ideal Working Conditions:	20-40° C, 60-100% RH
Size (H x W x D):	160 x 100 x 100 cm
Weight:	350 kg
Power Consumption:	17.0 kW
Compressor Power Consumption:	16.0kW
Average Power Consumption:	0.1 - 0.4* kWh/L
PS Phase:	380V - 50Hz Three Phase
Electronic Control:	KAV-KOR
UV:	Included
Refrigerant:	R407c
Chiller:	Optional
Noise Level:	74 dB

air≈water

*The actual Power Consumption will vary with temperature, R/H levels and energy costs. All technical data listed is subject to change without notice.



AW1000M Emergency Crisis Water Unit

The Air Water Bagging Machine – the Unique Machine for Providing Lifesaving Water Pouches

Air Water LifeSaver Water Pouches' Turn-key System can be delivered and set-up locally in any country worldwide within hours of need. The system is switched on, and within hours, the water extracted from the air is packaged into Water Pouches that can be easily transported and distributed to locals.

The Lifesaver System uses Air Water machines ranging in size from only 120 liters to larger machines making 5000 liters of drinkable water per day. This compact automatic liquid packing machine is guaranteed to cope with heavy workloads with speeds up to 25 packs per minute.



**AIR WATER BAGGING MACHINE
TECHNICAL SPECIFICATIONS***

Size (H x W x D):	870 x 900 x 1700 mm
Net Weight:	280 Kg
Packaging Material:	PE, Poly Cello, Foil+PE, Opp+PE
Bag Shaper:	Pillow-seal
Filling Method:	Piston-type
Film Width:	160 -320 mm
Bag Length:	100-150 mm
Content:	200-400 cc
Packing Speed:	20-25 bags per minute
Motor:	1/2 HP
Heater Tube:	300w x 1500 x 1
Power:	220 V, 50 Hz / 60 Hz 1 Phase



Water Bagging Machine



*All technical data listed is subject to change without notice.

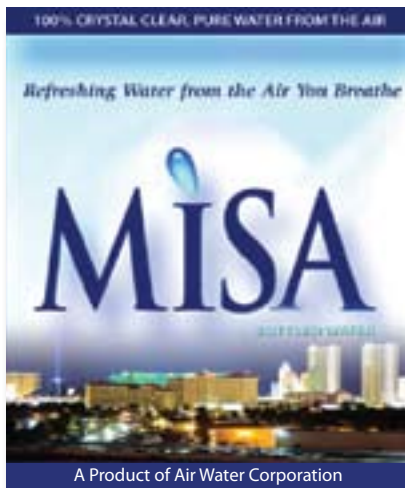
MISA

Bottled Water from the Air

Perhaps you think that all water is the same, or comes from the same place ... well up to now, you may have been right. It either comes from a river, a lake, a well, or even a spa. In all cases from a land-based source. Companies for years have taken this water and spent huge amounts of money to set up plants to clean and purify the water to bring you all sorts of different 'mineral waters', some cleaner and better than others. But the fact remains that their sources are land-based and thus will never be 100% clean.

MISA is the cleanest, clearest, purest water there is because it comes *from the AIR!* From the very same air that you breathe. Unbelievable but true. It is safe (because the water you will drink is the air that you breathe) but we take it to levels of cleanliness and purity that have never before been achieved.

So if you care about yourself, your body and your health, drink the *ONLY* water that is factually proven to be the best bottled water you can drink.



air ≈ water



MISA - Pure Bottled Water from Air



Air Water to Oil – A True New World Revolution!

Did you know that oil companies extract oil from the ground, and replace the oil with water? Yes, incredibly — they actually pump water down into the oil well. Why? Well, there are a number of reasons, but when we were approached to supply an air to water machine for this purpose, we really didn't ask why. We just supplied it.

Now after some 7 months of testing, Air Water is the *ONLY* company in the world to have achieved product approval and certification to supply any of a range of Air Water machines, customised for the “water to oil program”.



In addition, our air to water machines can provide total solutions for oil rigs and platforms, as well as to a host of other land and sea projects where the need for clean pure drinking water needs to be satisfied.

For all your needs for clean pure drinking water, just call us.

We're ready!



Air Water to Oil

Air Water – The Future

Every emerging technology needs time to develop and Air to Water is no different. However, the world's explosive populations growth, coupled with the finite levels of world resources, water being among them, has led to non stop research and development in the global quest for fresh water supplies.

Air Water has led the industry in the development of top quality machines, in terms of sizes, quality and simplicity in use. Our machines ranging from the smallest home unit to the largest in the field Mobile model, all work with clockwork efficiency, and are making their mark both in the location of use, and the annals of history.

In the near future, with our company continuing to allocate resources, both in time and funds to create and market new products, we will break new barriers and continue to lead the industry in the creation and production of new products utilizing our exclusive technology.

Coming in 2008 and pictured here, is our world exclusive *Air to Water Coffee Machine*. A machine that makes its own water, heats the water and brews hot cups of coffee or tea for that early morning 'get-me-up' drink!

And in the spring of 2009, comes our exciting new range of air to water fridges and freezers. Yes, home appliances, like fridges and freezers that make their own supply of drinking water, all from the air —

Yes, the air we breath.



New for 2008



Coming in 2009



For The Future, Come Back and See Us Anytime

The World of Air Water

International
AGENTS &
REPRESENTATIVES
worldwide

For information, contact:

AIR WATER International Group

407 Lincoln Road, Suite 304
Miami Beach, Florida 33139 USA
Tel: 305.672.6344 / Fax: 305.672.1965
Web address: www.airwatercorp.com
Email: info@airwatercorp.com

air~water

